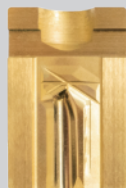
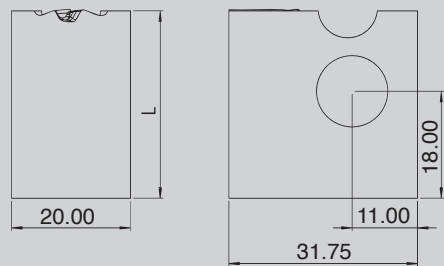


BDN FASTENERS



MBH

20 x 31.75 x 32 mm
High Speed Steel



MBW

20 x 31.75 x 34.5 mm
Carbonized Tungsten Steel

BDN FASTENERS



BDN FASTENERS



BDN FASTENERS®

NO. 47-37, Jiahua Rd., Gangshan Dist., Kaohsiung City 820, Taiwan

T +886-7-6282702

F +886-7-6282601

E info@broadenal.com.tw

www.bdntoolings.com

**DRILL POINT DIE
CATALOGUE**

100% Made in Taiwan

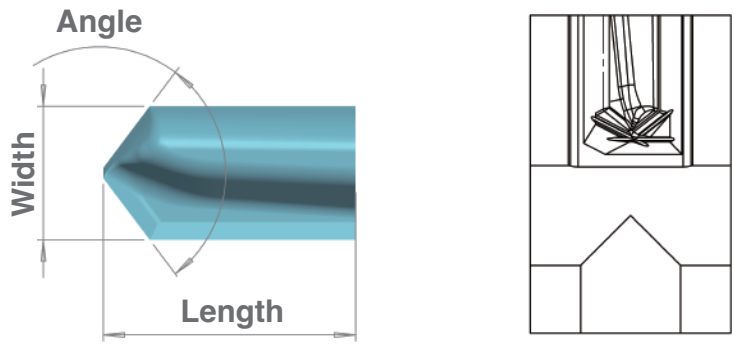


About Us

Drilling point dies play a crucial role in enhancing manufacturing efficiency, reducing costs, and, most importantly, ensuring quality control. BDN Fasteners® established in-house manufacturing for drilling point dies to achieve these benefits while prioritizing our customers by delivering the highest-performing self-drilling fasteners on the market.

Our drilling point design has been refined through years of experience in OEM, ODM, and the development of the BDN Fasteners® brand. It can be customized for enhanced precision, reduced wandering, and improved penetration across various substrates.

Product Data Sheet



| Gauge (#) | Size (mm) | Type | Angle | Width | Length |
|-----------|-----------|----------|-------|-------|--------|
| 6 | 3.5 | Standard | 100° | 2.80~ | 4.5 |
| | | TP-S | 110° | 2.90 | 5.0 |
| 7 | 3.9 | Standard | 100° | 3.00~ | 4.5 |
| | | TP-S | 110° | 3.25 | 5.5 |
| 8 | 4.2 | Standard | 100° | 3.35~ | 4.5 |
| | | TP-S | 110° | 3.50 | 5.5 |
| 10 | 4.8 | Standard | 90° | 3.85~ | 5.5 |
| | | TP-S | 100° | 3.85~ | 6.5 |
| 12 | 5.5 | TP-L | 105° | 4.10 | 7.0 |
| | | DE | 110° | 4.10 | 7.5 |
| 14 | 6.3 | Standard | 90° | 4.50~ | 6.0 |
| | | TP-S | 100° | 4.70 | 7.0 |
| 16 | 7.0 | TP-L | 105° | 4.85~ | 8.0 |
| | | DE | 110° | 5.00 | 9.0 |
| 18 | 7.6 | Standard | 90° | 5.45~ | 9.0 |
| | | TP-S | 105° | 5.65 | 9.5 |
| 20 | 8.5 | TP-L | 110° | 5.65 | 12.0 |
| | | DE | 110° | 5.65 | 15.0 |



Inner Box
Size: 80 x 50 x 40 mm



Drilling Point Types

| | | | |
|------------------------|--|--|--|
| Standard | | | |
| Thunder Point-S (TP-S) | | | |
| Thunder Point-L (TP-L) | | | |
| Dual Edge (DE) | | | |